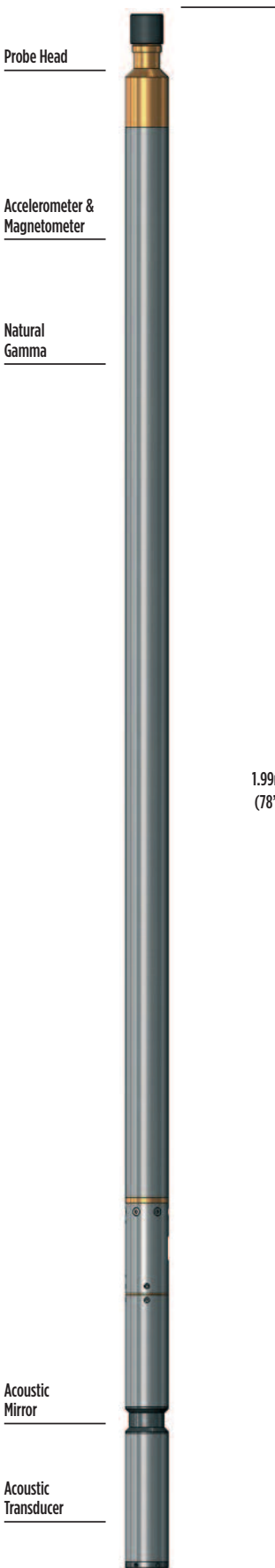


# PROBES

## HIGH RESOLUTION ACOUSTIC TELEVIEWER (HRAT)



The High Resolution Acoustic Televiewer (HRAT) provides a continuous high-resolution oriented ultrasound image of the borehole wall.

The probe uses a fixed acoustic transducer and a rotating acoustic mirror to scan the borehole walls with a focussed ultrasound beam. The amplitude and travel time of the reflected acoustic signal are recorded as separate image logs.

Features such as fractures reduce the reflected amplitude and appear as dark sinusoidal traces on the log. The travel-time log is equivalent to a 360-arm caliper and shows diameter changes within open fractures and 'break-outs'. Directional information is also recorded and used to orient the images in real time.

### SPECIFICATION:

#### Applications

- Fracture identification and orientation
- Stratigraphic studies
- Local stress studies (break-out)
- Core orientation
- Cased-hole studies

#### Operating Conditions

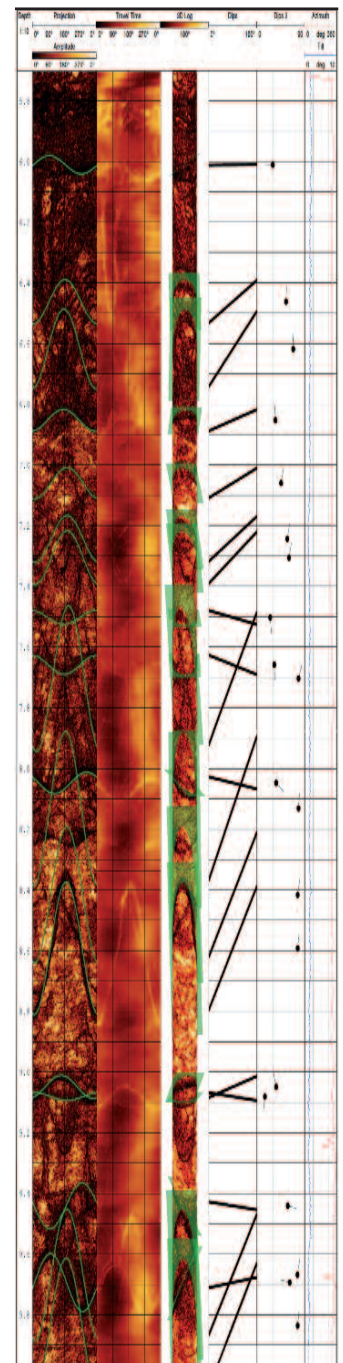
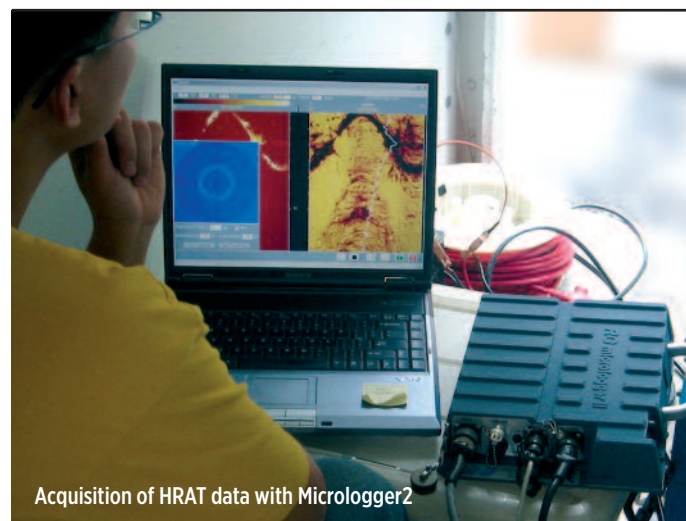
- Borehole Type: Fluid filled
- Recommended Logging Speed: 2.5m/min

#### Specifications

- Diameter: 42mm
- Length: 1.55m or 1.99m (with natural gamma option)
- Weight: 5kg
- Temperature (max): 70°C
- Transducer type: 1.5MHz piezo-composite
- Rotation rate: 5 - 20rev/s
- Sample rate: up to 360/rev

#### Part Numbers

- 1002184 HRAT probe
- 1002192 HRAT including natural-gamma



Example of logging data

High Resolution Acoustic Televiewer (HRAT) Probe

Scan the QR code to go directly to [www.robertson-geo.com](http://www.robertson-geo.com)

