

PROBES

WATER QUALITY



The Water Quality probe is based on the industry-standard Ocean Seven 302™ probe manufactured by Idronaut Srl.

The tool is available in 'saline' and 'fresh-water' versions with different conductivity ranges and available measurements. The probe enables a rapid, continuous profile to be taken of all the selected parameters throughout the borehole either for direct use or as a guide for subsequent sampling.

Principle of Measurement:

The probe contains up to seven specific sensors to acquire fluid-property measurements from a water-well. Use of the latest robust membrane sensor technology and low drift electronics eliminates the need for complex field calibrations. Correction of measurements to standard temperature and pressure is carried out automatically on the Robertson Geo Micrologger surface system.

SPECIFICATION:

Features

- Continuous log of fluid properties
- Measurement in-situ reduces sample storage requirements and contamination

Measurements

- Temperature
- Pressure
- Fluid conductivity
- Oxygen (ppm)
- pH

Applications

Water

- Water quality measurements
- Location of aquifers
- Groundwater flows
- Contamination studies

Operating Conditions

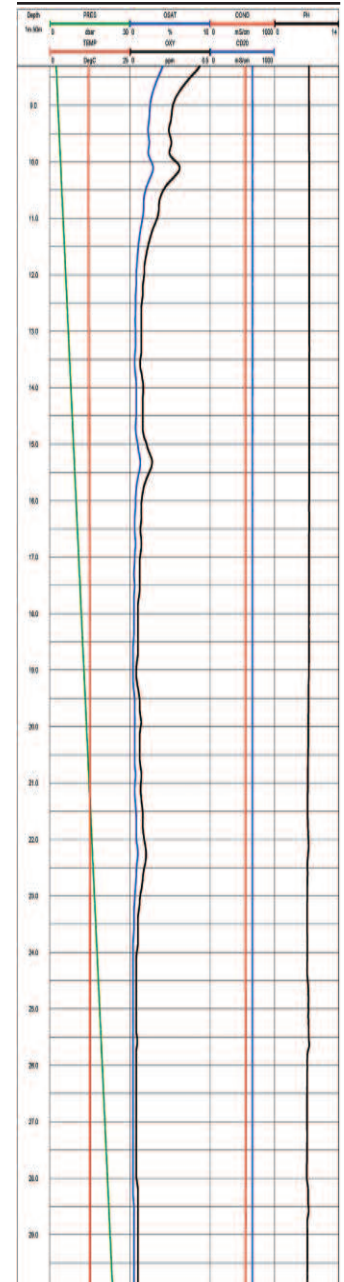
- Borehole type: open/cased, water-filled
- Recommended Logging Speed: 1.5m/min

Specifications

- Length: 1.79m
- Diameter: 45mm
- Weight: 5.5kg
- Temperature: 0-50°C
- Max. pressure: 15MPa
- Response time constant: 50ms (temperature pressure, conductivity)
Others 3s
- Pressure: Range: 0-10MPa
- Temperature: 1-49°C
- Conductivity Range: 0 to 6.4mS/cm (fresh-water)
0 to 64mS/cm (saline water)
- Dissolved-oxygen Range: 0 to 50ppm
- pH Range: 0 to 14pH
- Redox measurement: Range -1000 to 1000mV

Part Numbers

- 1002064 Water Quality probe (fresh-water version)
- 1013204 Water Quality probe (saline water version)



Examples of logging data

Scan the QR code to go directly to www.robertson-geo.com

